

# LUXURIOUS 3 BHK HOMES



**INTRODUCING NEW TOWER  
DAYTONA**

# ABOUT DAYTONA

Introducing Daytona – Tower D at Civitech Strings, Where architectural elegance meets boundless space. Presenting luxurious 3 BHK residences in Sector 12, Greater Noida West, sizes start from 1975 sq. ft. to 2075 sq. ft., designed for those who desire more than a home – they seek a masterpiece. Soaring 12 ft. floor-to-floor height, premium teakwood door frames, biometric security, and flawless finishes by Jaquar & Godrej set the tone for grandeur. Indulge in world-class amenities – a double-height grand lobby, curated sports arenas, and contemporary interiors that redefine elegance. Daytona isn't just a residence, it's a statement. Elevate your lifestyle with an address as rare as your aspirations.



**Earthquake**  
Resistant Structure



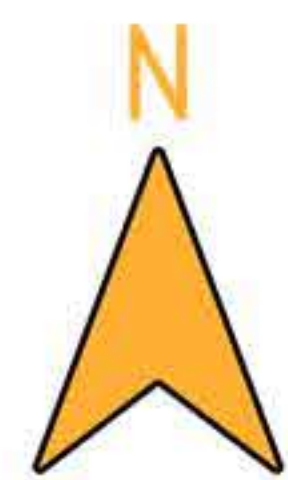
**Podium Based Tower** for  
The Calm **Environment**



**IGBC Gold Rated**



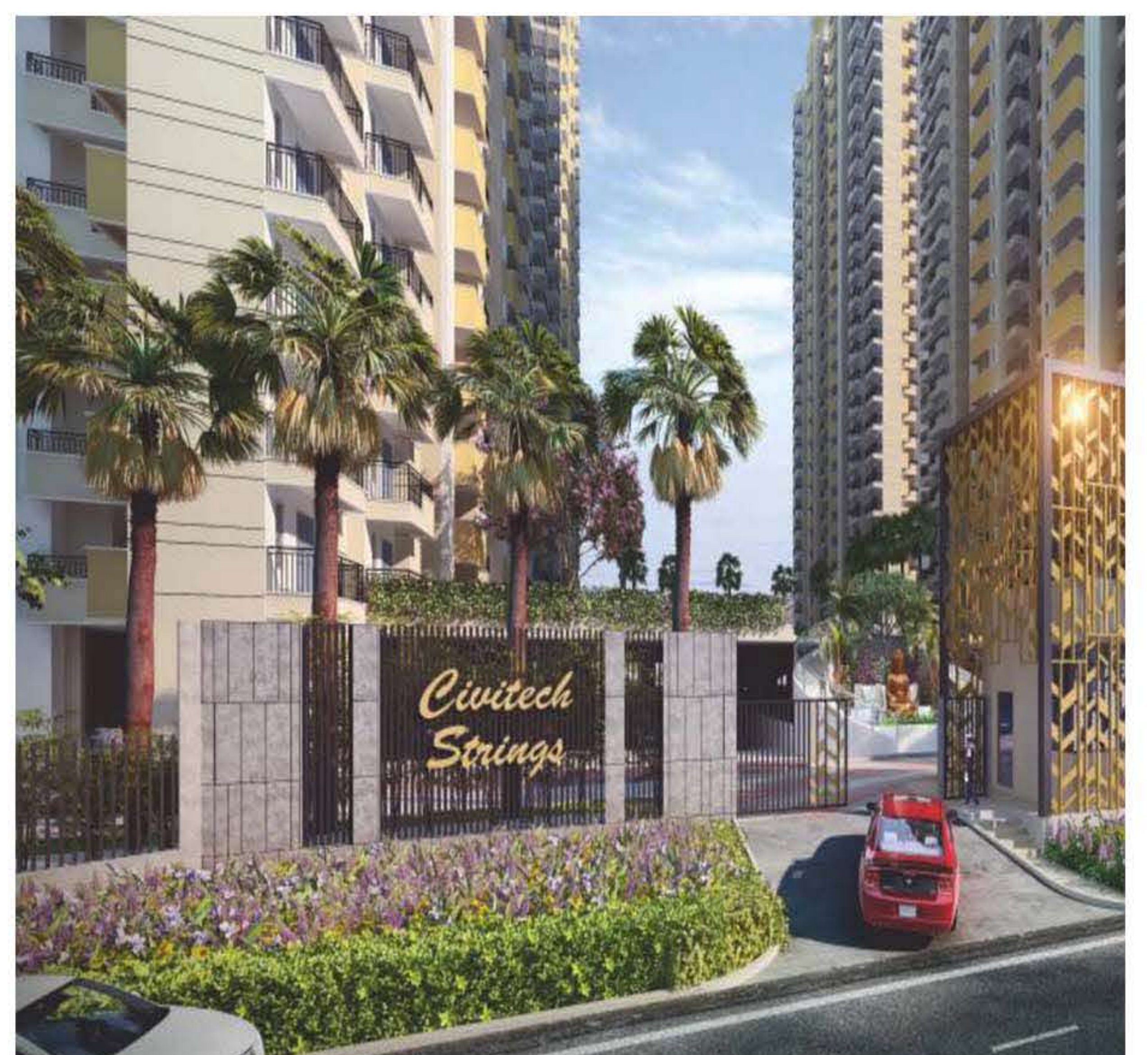
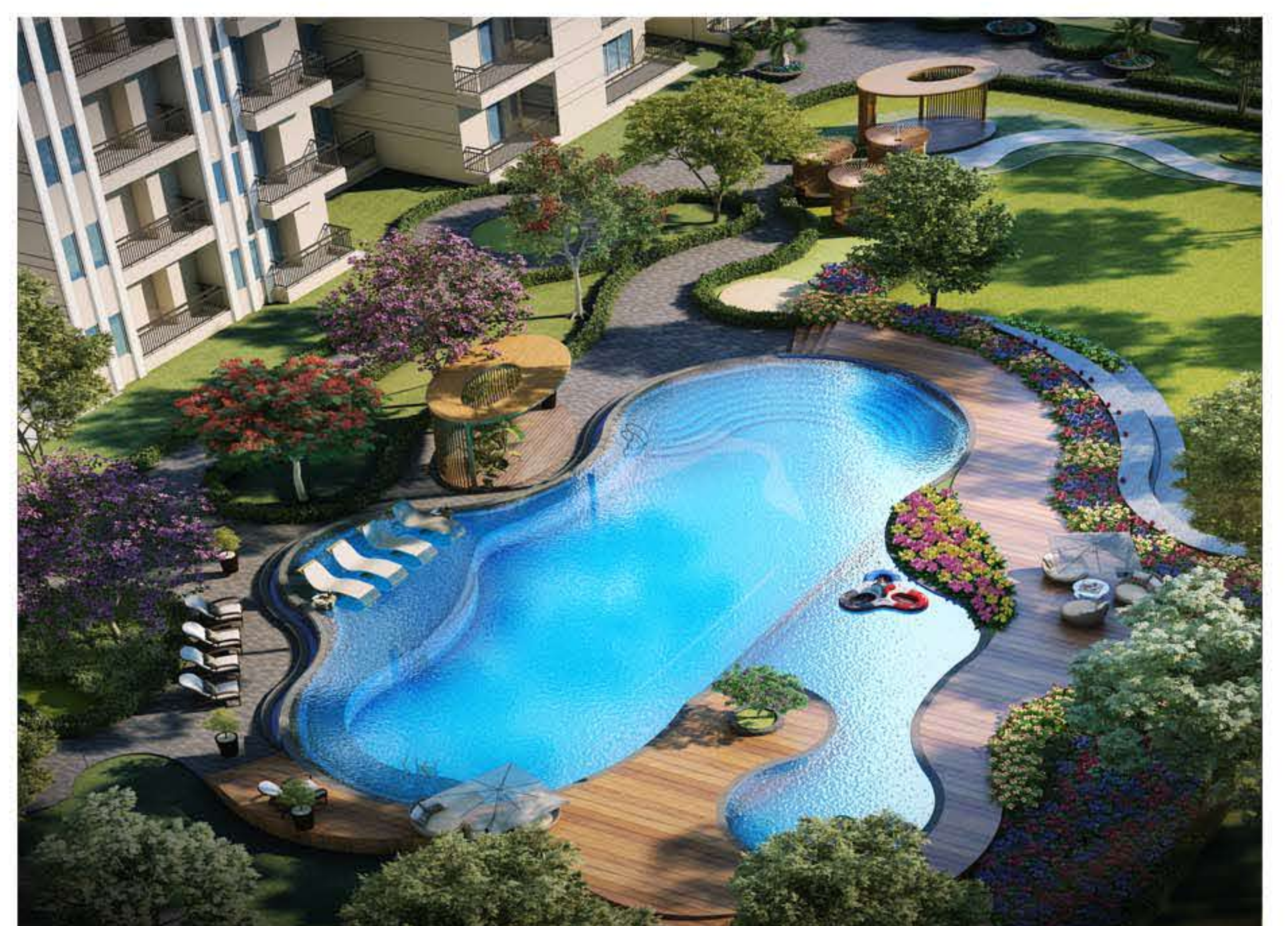
**6000 SQ. MTR**  
of Central Park



**North-East Facing**  
Corner Plot



**Aluminium form work-based**  
structure for durability.



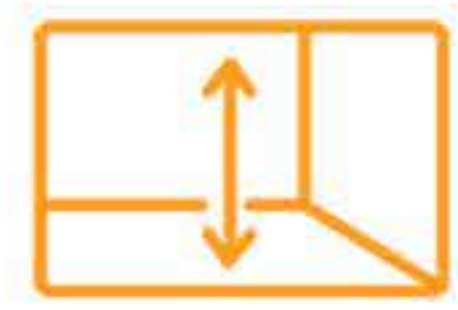
**Super Built-up area:** The constructed areas of the project comprise the apartment's Polly line area and other constructed areas of common use. All specifications, designs, layout, images, conditions are only indicative and some of these can be changed at the discretion of the builder/architect/authority. These are purely conceptual and constitute no legal offerings. 1 sqm = 10.764 sq. ft.

RERA Reg No. UPRERAPRJ646272 | [www.up-rera.in](http://www.up-rera.in)

# SITE MAP



## What Makes Tower D More Premium?



Ceiling Height - 12FT.



Home Automation Facility.



High Speed Premium Lifts.



Biometric lock on the main door.



Shower cubicles in master bedroom with diverter arrangement.

2x

Double-heightened entrance lobby with sports amenities.



Hard wood filled doors



Premium teakwood door frames and teakwood molding.



Antique finish branded hardware fittings and handles. (godrej or equivalent)



Large vitrified tiles for flooring (Orient, Somany, Kajaria or equivalent.)



Ample sunlight for homes that truly breathes.



High-quality modular switch sockets (Philips, Schneider, or equivalent).



Wall-mounted WCs and countertop washbasins (Jaquar, Kohler, Grohe, Cera, or equivalent).



Premium Plastic Paints in all rooms.



Premium UPVC doors and shutters with SS mesh. (Jaali)

**Super Built-up area:** The constructed areas of the project comprise the apartment's Polly line area and other constructed areas of common use. All specifications, designs, layout, images, conditions are only indicative and some of these can be changed at the discretion of the builder/architect/authority. These are purely conceptual and constitute no legal offerings. 1 sqm = 10.764 sq. ft.

RERA Reg No. UPRERAPRJ646272 | www.up-rera.in

# FLOOR PLANS

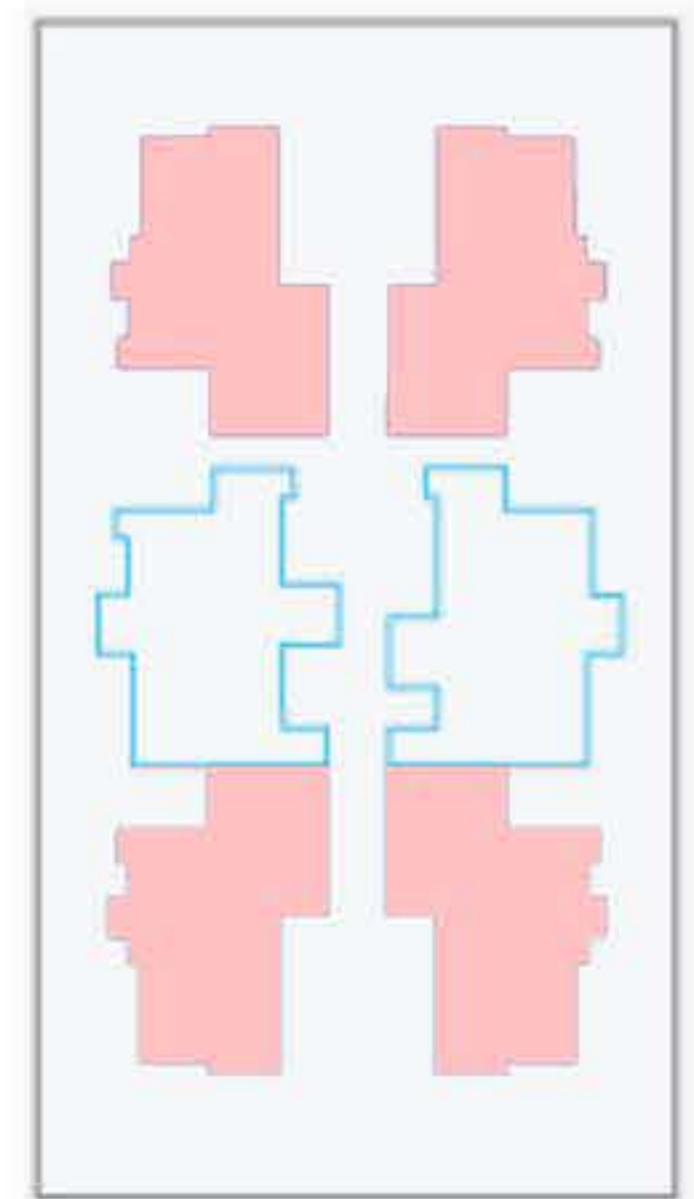
## TYPE 1

### 3 BHK

BUILT UP AREA = 1475 SQ.FT. (137.08 SQ.MT.)

SUPER AREA = 1975 SQ.FT.

CARPET AREA = 1125 SQ.FT. (104.52 SQ.MT.)



DRAWING CUM DINING | 3 BEDROOMS | KITCHEN | 3 TOILETS | 5 BALCONIES

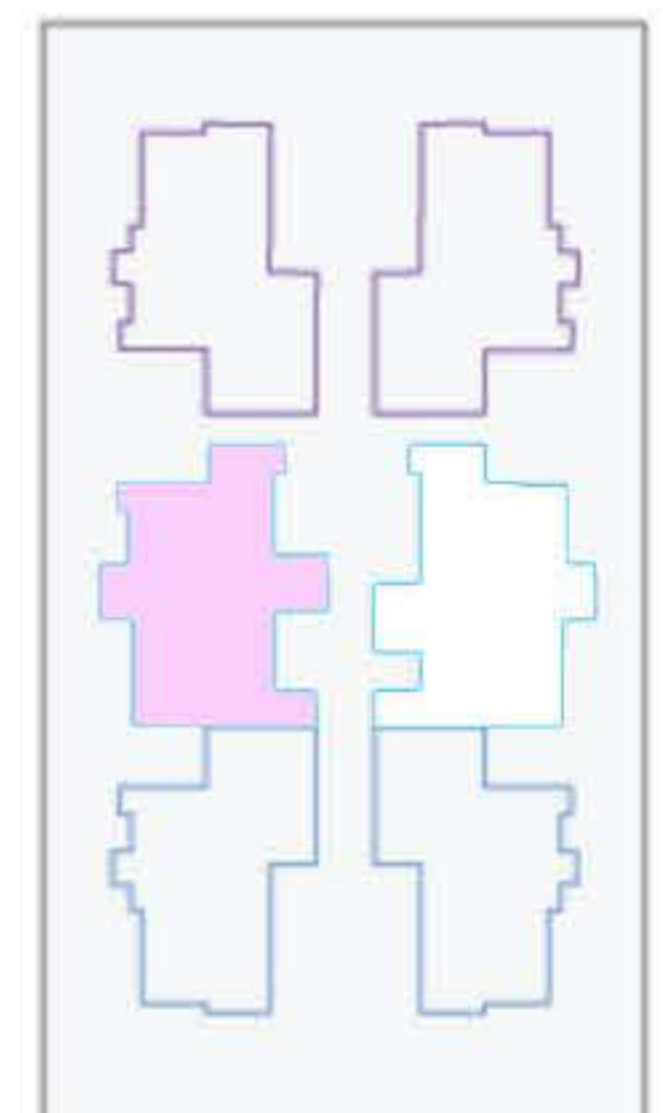
## TYPE 2

### 3 BHK

BUILT UP AREA = 1555 SQ.FT. (144.50 SQ.MT.)

SUPER AREA = 2075 SQ.FT.

CARPET AREA = 1205 SQ.FT. (111.96 SQ.MT.)



DRAWING CUM DINING | 3 BEDROOMS | KITCHEN | 3 TOILETS | 4 BALCONIES

**Super Built-up area:** The constructed areas of the project comprise the apartment's Polly line area and other constructed areas of common use. All specifications, designs, layout, images, conditions are only indicative and some of these can be changed at the discretion of the builder/architect/authority. These are purely conceptual and constitute no legal offerings. 1 sqm = 10.764 sq. ft.

RERA Reg No. UPRERAPRJ646272 | [www.up-rera.in](http://www.up-rera.in)



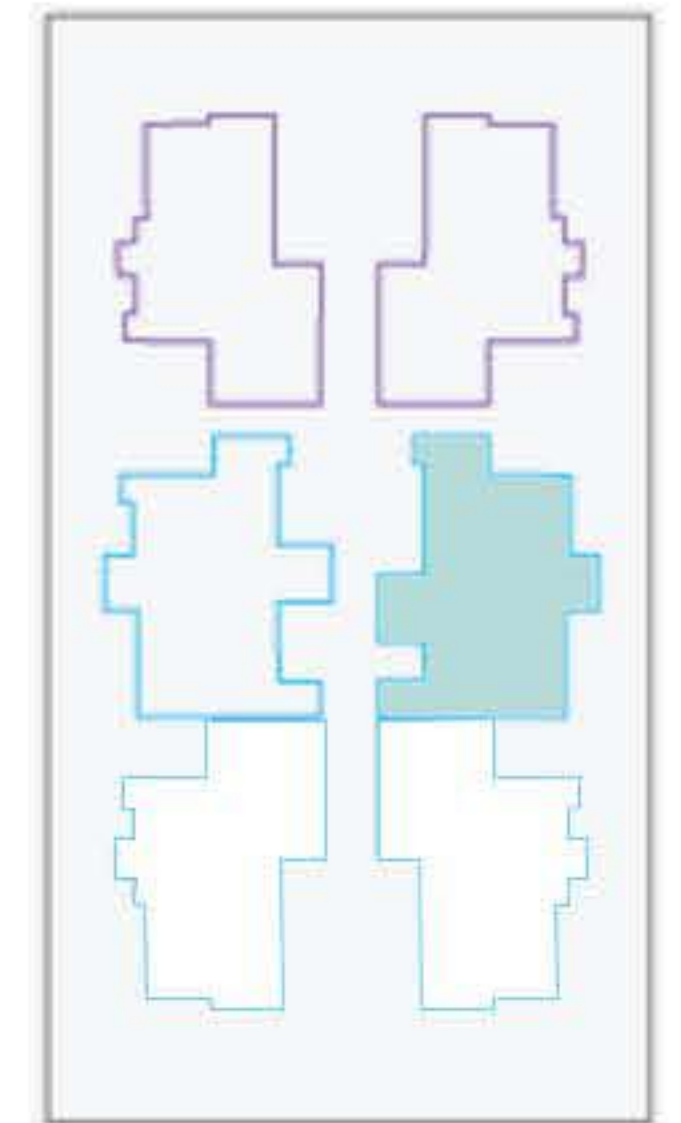
# TYPE 2A

## 3 BHK

BUILT UP AREA = 1560 SQ.FT. (144.83 SQ.MT.)

SUPER AREA = 2075 SQ.FT.

CARPET AREA = 1211 SQ.FT. (111.96 SQ.MT.)



DRAWING CUM DINING | 3 BEDROOMS | KITCHEN | 3 TOILETS | 4 BALCONIES

## WHY CIVITECH?

Choosing Civitech Developers means placing your trust in a legacy of over three decades, built on the pillars of quality, integrity, and visionary leadership. Under the guidance of our founder, Mr. Subodh Goel, we have not only constructed exceptional spaces but also crafted many success stories across Delhi-NCR.

With every project, we go beyond just delivering homes, we create thoughtfully designed environments where aspirations are nurtured, communities thrive, and families find a sense of belonging that lasts for generations.

Delivered Projects




**Super Built-up area:** The constructed areas of the project comprise the apartment's Polly line area and other constructed areas of common use. All specifications, designs, layout, images, conditions are only indicative and some of these can be changed at the discretion of the builder/architect/authority. These are purely conceptual and constitute no legal offerings. 1 sqm = 10.764 sq. ft.

RERA Reg No. UPRERAPRJ646272 | www.up-rera.in

# EVERY NOTE OF LIFE IS CLOSE BY

 On the Noida - Gr. Noida Link Road

 15 Min. Drive to NH-24

 Next to Upcoming Metro Station

 20 Min. from Noida City Centre

 5 Min. Drive to Char Murti Chowk

 Close to Prestigious Schools, Hospitals, Recreational Facilities and Banks



## HOME AUTOMATION FEATURES



Light Control



Fan Control



GEYSER Control



Motion Sensor



PNG Leak Detector



Scene Control

**SAG Realtech Private Limited (Civitech Group of Companies)**

Corporate Office : Civitech House, H-71, Sector-63, Gautam Budhh Nagar, Noida (UP) | Site Office : GH-2B, Sector-12, Greater Noida (West), (UP),  
Contact: +91 1204213240 | Email: info.strings@civitech.in | www.civitech.in | RERA Reg No. UPRERAPRJ646272 | www.up-rera.in